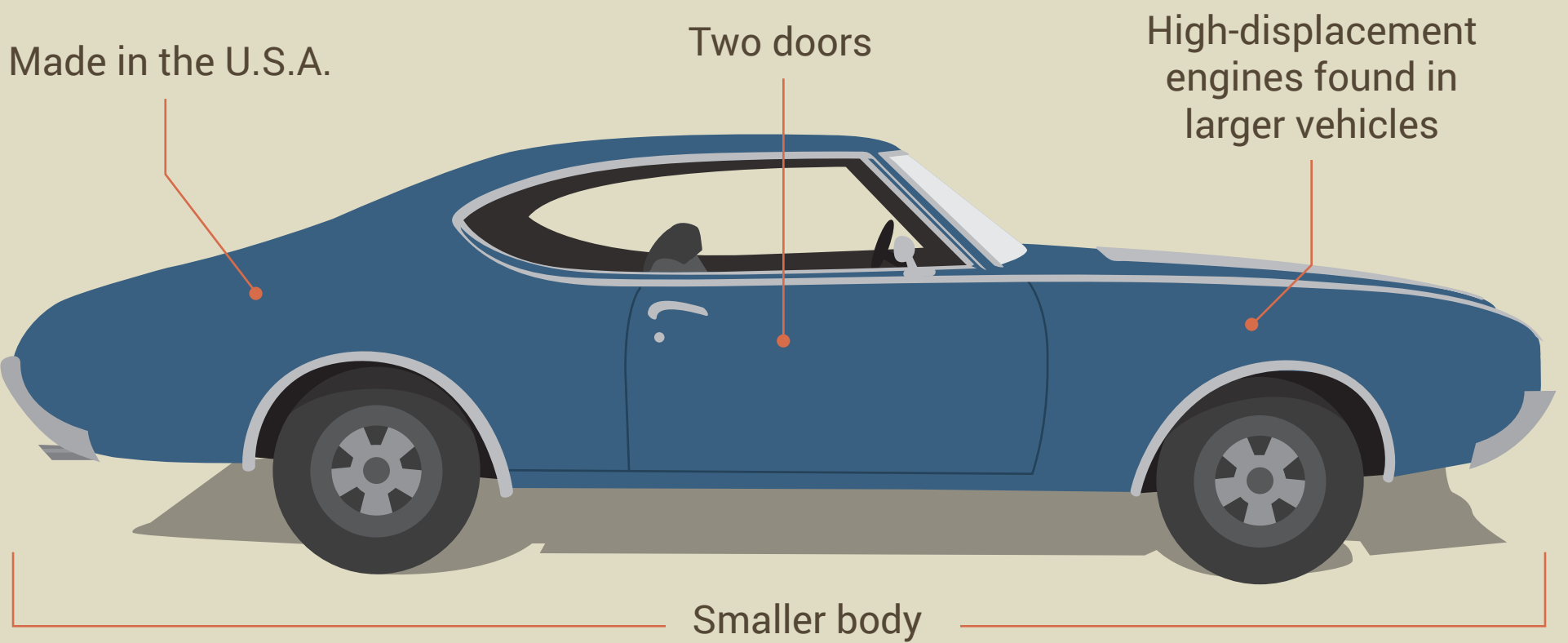
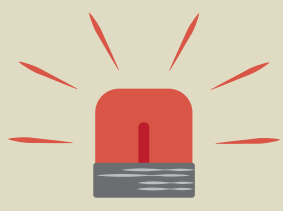


GEARBOXES AND MUSCLE CARS

ANATOMY OF A MUSCLE CAR

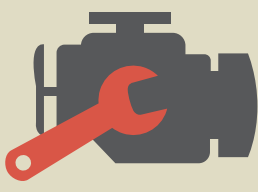


MUSCLE CAR HISTORY



1920s

Moonshiners modify their vehicles so they're faster than police cars



1940s

Moonshiners turned gearheads modify their cars for street races



1949

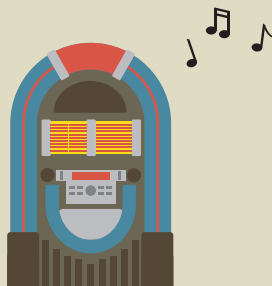
Oldsmobile releases the Rocket 88, the original muscle car

V-8 engine with a high-compression overhead valve



1950s & 1960s

Hemis and other innovations forever change how muscle cars perform and purr



1951

"Rocket 88" by the Kings of Rhythm is the third-most popular jukebox song and first rock-n-roll album



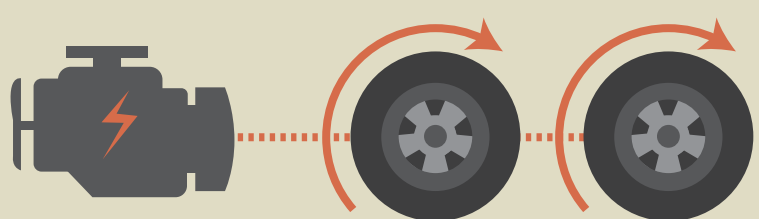
1950

The Rocket 88 wins 8 of 10 NASCAR races, fueling America's need for speed

FALK DRIVES BOOST MUSCLE CAR SPEEDS

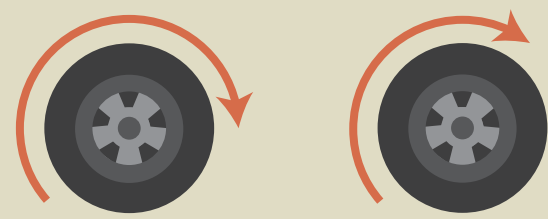
Drivetrain components:

Transmission



Sends power from the engine to a car's wheels and regulates torque

Differential

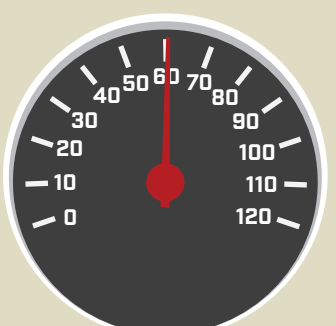


Lets wheels spin at different speeds



How an engine operates at different speeds at the same RPM:

Falk gearbox parts connect in various combinations to decrease speed and increase torque, changing the gear ratio between the engine and wheels.



Gaining momentum from 0 to 60:

A speed reducer gearbox makes the engine turn faster than the output shaft, at a 4:1 ratio. As the ratio approaches 1:1, torque and speed change.

Mar-Dustrial Sales, Inc.

Serving Industry Since 1947

www.mardustrial.com